

Oklahoma Monthly Climate Summary
MARCH 2016



The dry weather that had plagued the state during the first two months of 2016 continued during March. Drought conditions spread across nearly all of northwestern Oklahoma and aided the massive Anderson Creek wildfire that burned 367,620 acres across Woods County in Oklahoma and the adjacent counties in southern Kansas. The total acreage burned in Oklahoma amounted to 88,082, all within Woods County. The fire, whipped by winds of over 60 mph, began on March 22 near Camp Houston in Woods County before quickly spreading to the north and then east. Oklahoma

Other notable events during March include a late snowfall on Eastern Sunday, a late freeze, and an increase in drought conditions across northwestern Oklahoma. The snowfall amounts on the 27th were generally between 2-4 inches and confined to the Panhandle and far northwestern Oklahoma. Laverne led preliminary totals with 6 inches. The week before, a cold front ushered in frigid air that dropped minimum temperatures well below seasonal norms. From March 18-21, much of the state had spent at least 10

March 2016 Statewide Extremes

Description	Extreme	Station	Day
High Temperature	89°F	Beaver	22
Low Temperature	8°F	Kenton	20
High Precipitation	8.19 in.	Durant	--
Low Precipitation	0.07 in.	Kenton	--

Forestry Services estimated more than 1,000 bales of hay, hundreds of miles of fence and approximately 600 livestock were lost in the Oklahoma portion of the fire, and altogether 16 residential structures and 25 other structures were burned in Kansas and Oklahoma. The fire was the fourth largest to occur east of the Rockies in at least the last two decades according to the National Interagency Fire Center. Many other smaller fires burned in other areas of the state throughout the month.

The month's other big weather story was the outbreak of severe weather on March 30. A strong upper-level storm system and associated surface front, complete with a distinct dryline, kicked off storms early in the afternoon across south central and central Oklahoma, some of which quickly became severe. The worst storms were saved for northeastern Oklahoma later in the evening. The National Weather Service office in Tulsa reported two tornadoes on the night, both rated EF-2 in strength. The first started south of Skiatook in Osage County and traveled through north Tulsa before lifting near Verdigris in Rogers County. Significant damage and four injuries were reported with this tornado. That same storm then produced another tornado near Claremore, again producing significant damage. Other reports of large hail, strong winds and torrential downpours were noted from south central up through northeastern Oklahoma during the day.

March 2016 Statewide Statistics

Temperature

	Average	Depart.	Rank (1895-2016)
Month (March)	54.2°F	3.8°F	18th Warmest
Year-to-Date (Jan-Mar)	46.6°F	3.1°F	12th Warmest

Precipitation

	Total	Depart.	Rank (1895-2016)
Month (March)	2.39 in.	-0.65 in.	59th Driest
Year-to-Date (Jan-Mar)	3.79 in.	-2.64 in.	30th Wettest

Depart. = departure from 30-year normal

hours below freezing according to the Mesonet, with the northwestern quarter seeing temperatures drop below 24 degrees for similar time periods.

According to preliminary data from the Oklahoma Mesonet, the March statewide average rainfall total was 2.4 inches, more than half an inch below normal. That total was a bit deceptive, however, due to heavy rainfall across the southeastern quarter of the state. Most other areas were from 1-2 inches below normal. That brought the year-to-date statewide average to 3.8 inches, 2.6 inches below normal, to rank as the 30th driest January-March since records began in 1895. The Panhandle and north central Oklahoma saw their 19th- and 20th-driest first three months of the year, respectively. That dry stretch allowed moderate drought to span nearly 20 percent of the state according to the March 29 U.S. Drought Monitor report, all in the northwestern corner of the state. In addition, more than 39 percent of the state was considered to be abnormally dry, a precursor to drought. Warmer than normal weather aided the intensifying drought. The statewide average as measured by the Mesonet was 54.2 degrees, 3.8 degrees above normal and the 18th

warmest March on record. Combined with the warm start to the year, that brought the January-March statewide average to 46.6 degrees, the 12th warmest such period on record.

MARCH 2016 DAILY SUMMARIES

MARCH 1-3: Two cold fronts moved through the state between the 1st and 3rd, triggering showers and thunderstorms as it passed. The highest amounts of rainfall each day occurred in Eufaula (1.31in.) on the 1st, Clayton (1.06in.) on the 2nd, and Mt. Herman (.49 in.) on the 3rd. Some storms became severe with 1.00-1.25 inch diameter hail falling in portions of central and south-central Oklahoma. Cole and Stuart reported 1.75 inch hail on the 2nd. The advancement of cool air was evident when the high maximum temperatures only measured 69 degrees and 70 degrees in the south on the 1st and 3rd. Temperatures tried to rebound slightly on the 2nd with the highest temperature reaching 78 degrees in Kenton and Slapout. The lowest maximum temperatures ranged from the mid-50s to the low 60s. The highest minimum temperatures occurred in the south, ranging in the mid-upper 40s. The lowest minimum temperatures fell below freezing between 24 and 28 degrees. Winds were breezy, averaging 14-19mph. The highest wind gusts each day were 55mph in Medicine Park on the 1st, 57mph in Slapout on the 2nd, and 44mph in Broken Bow on the 3rd.

MARCH 4-6: The 4th through the 6th were rain-free. Despite the cold front that entered the state on the 4th, maximum temperatures climbed, ranging from the mid-60s to the upper 70s and low 80s. The warmest minimum temperature recorded in the state increased from 46 degrees in Cheyenne to 55 degrees in Oklahoma City. The coolest minimum temperatures were still roughly 10 degrees below freezing on the 4th and 5th. On the 6th, the lowest temperature measured was 37 degrees in Kenton. The highest daily average wind speeds were 17mph on the 4th, 14mph on the 5th, and 25mph on the 6th.

MARCH 7-9: Showers and thunderstorms passed through the state ahead of a cold front while cooler temperatures were left behind it. The highest maximum temperature recorded during this time fell from 80 degrees in Buffalo, Hollis, and Freedom on the 7th to 68 degrees in Butler on the 9th. The lowest maximum temperature decreased from 63 degrees to 58 degrees. Minimum temperatures ranged between 33 and 62 degrees on the 7th, and between 25 and 58 degrees by the 9th. Heavy rain fell and storms became severe with the hardest hit areas being in the southern half of the state, including the Oklahoma City metro. The top daily rainfall amounts were 2.46 inches in Holdenville on the 7th, 3.01 inches in Bessie on the 8th, and 2.04 inches in Idabel on the 9th. Broken Bow reported flooding on the 9th. Daily average wind speeds started out breezy, but gradually decreased each day. Average wind speeds were less than 24mph on the 7th, less than 12mph on the 8th, and less than 9mph

on the 9th. The highest wind gust during this period was 74mph in Fittstown on the 8th.

MARCH 10-12: Advection fog covered much of the region on the 10th and 12th with widespread drizzle lingering all three days. Maximum temperatures primarily huddled between 60 and 70 degrees. Minimum temperatures ranged between the upper 20s and upper 50s. Daily rainfall totals were generally less than half of an inch on the 10th and 11th, and less than a tenth of an inch on the 12th. Idabel was a bit of an outlier as it measured .85 inches on the 10th. Daily average wind speeds were less than 15mph.

MARCH 13: An upper-level low caused additional showers and thunderstorms on the 13th. Some storms became severe with hail reports in the southeast. Rainfall amounts varied from a tenth of an inch to 1.58 inches in Stillwater. High temperatures were between 60 degrees at Red Rock and 76 degrees in the southeast. Lows were between 38 degrees in Hooker and 57 degrees in Cloudy. Average wind speeds were 4-13mph. The top wind gust that day was 40mph in Boise City.

MARCH 14-16: Dense fog formed in northern Oklahoma on the 14th, but quickly dissipated. Although skies were rain-free, a cold front moved in from the northwest and caused temperatures to drop. High temperatures ranged from 77 to 88 degrees on the 14th, 60 to 83 degrees on the 15th, and 55 to 77 degrees on the 16th. The highest minimum temperatures decreased from 54 degrees on the 14th to 46 degrees on the 16th, and the lowest minimum temperatures decreased from 29 degrees to a chilly 18 degrees. The warmest area in the state was southern Oklahoma and the coolest area was the panhandle throughout this three-day stretch. Daily average wind speeds were less than 14mph, less than 19mph, and less than 11mph each consecutive day.

MARCH 17-18: Showers and thunderstorms were once again the name of the game as a cold front pushed through the state. The highest maximum temperatures plummeted from 71 degrees in the northeast to 59 degrees in the southeast. Some areas only got as warm as 59 degrees on the 17th and 36 degrees on the 18th. The highest minimum temperatures were generally around 50 degrees and the lowest minimum temperatures were in the upper teens and low 20s. The highest accumulation of rainfall was .45 inches in Durant on the 17th and 2.64 inches again in Durant on the 18th. Some storms in southern Oklahoma became severe with hail reports maxing out at 1 inch in diameter in Love County on the 17th and McClain County on the 18th. Daily average wind speeds were 3-13mph on the 17th and 5-19mph on the 18th.

MARCH 19-20: Temperatures were cooler than average from the previous day's cold front. High temperatures ranged from the low-mid 40s to 60 degrees each day. The warmest minimum temperature in the state decreased from 41

degrees on the 19th to 33 degrees on the 20th. The coolest minimum temperature was 10 degrees on the 19th and 8 degrees on the 20th. Kenton recorded the coldest temperature both days. Skies were clear. Daily average wind speeds were less than 16mph on the 19th and less than 12mph on the 20th.

MARCH 21-22: Clear skies, an upper-level ridge, and southerly air flow combined to make for much warmer weather and high fire danger. On the 21st, highs ranged from 60 degrees in Mt. Herman to 82 degrees in the panhandle. Lows that day were between 23 degrees in Wister and 38 degrees in Beaver. On the 22nd, highs were between 70 degrees in Mt. Herman and 89 degrees in Beaver, and lows varied between 32 degrees in Broken Bow and 58 degrees in Buffalo. A wind advisory was in effect with 5-27mph daily average wind speeds and peak gusts reaching 47mph in Hinton, Watonga, and Fairview on the 21st and 52mph in Boise City on the 22nd.

MARCH 23: A cold front and dryline moved through the state, creating ideal conditions for severe weather and continued fire danger. Scattered showers and thunderstorms were primarily confined to eastern Oklahoma. The top three rainfall amounts were 1.27 inches in Eufaula, 1.69 inches in Wister, and 2.25 inches in Clayton. Hail between 1.00 and 1.75 inches in diameter was observed in the northeast and east-central Oklahoma and an EF-2 tornado was reported in Adair County. High temperatures were between 55 degrees in Kenton and 84 degrees in Waurika. Low temperatures were between 31 degrees in Boise City and 60 degrees in Stigler and Broken Bow. Daily average wind speeds were 6-28mph and the top two wind gusts were 65mph in Eufaula and Camargo. Multiple other areas had gusts in the 50s and 60s that day.

MARCH 24: Temperatures were much cooler on the 24th due to the previous day's cold front. High temperatures were between 54 and 62 degrees and low temperatures were between 23 and 43 degrees. Skies were rain-free except for some lingering sprinkles in the southeast, measuring only as much as .35 inches in Idabel. The maximum peak wind gust was 60mph in Cheyenne and average wind speeds were 5-19mph.

MARCH 25-26: The highest maximum temperatures regained momentum and increased to the mid-upper 70s before a cold front moved in on the 26th. The passing front only affected the lowest maximum temperatures as they measured 62 degrees on the 25th and 44 degrees on the 26th. The highest minimum temperature in the state was 39 degrees on the 25th and 51 degrees on the 26th. The lowest minimum temperatures were in the 20s. Showers and thunderstorms entered northwest Oklahoma on the 25th, but left only trace amounts of rainfall. On the 26th, however, Grandfield and Tipton received as much as .46 inches and .38 inches of precipitation, respectively. Peak

wind gusts were in the 40s and 50s and daily average wind speeds were less than 19mph.

MARCH 27: As a cold front continued through the area on the 27th, Oklahoma experienced a mixture of precipitation types. Snow fell in the panhandle and far northwest Oklahoma, leaving as much as 4.9 inches in Slapout and 3 inches in Buffalo. Other towns in that area received 1-3 inches of snow. The highest amount of rainfall measured was .55 inches in Seiling and 1.00-1.25 inch hail was reported in Comanche and Tillman County. Maximum temperatures were between 51 degrees in Miami and 65 degrees in Broken Bow. Minimum temperatures were between 20 degrees in Hooker and Boise City and 43 degrees in Ardmore and Newport. The highest wind gust that day was 53mph in Medicine Park and daily average wind speeds were less than 18mph.

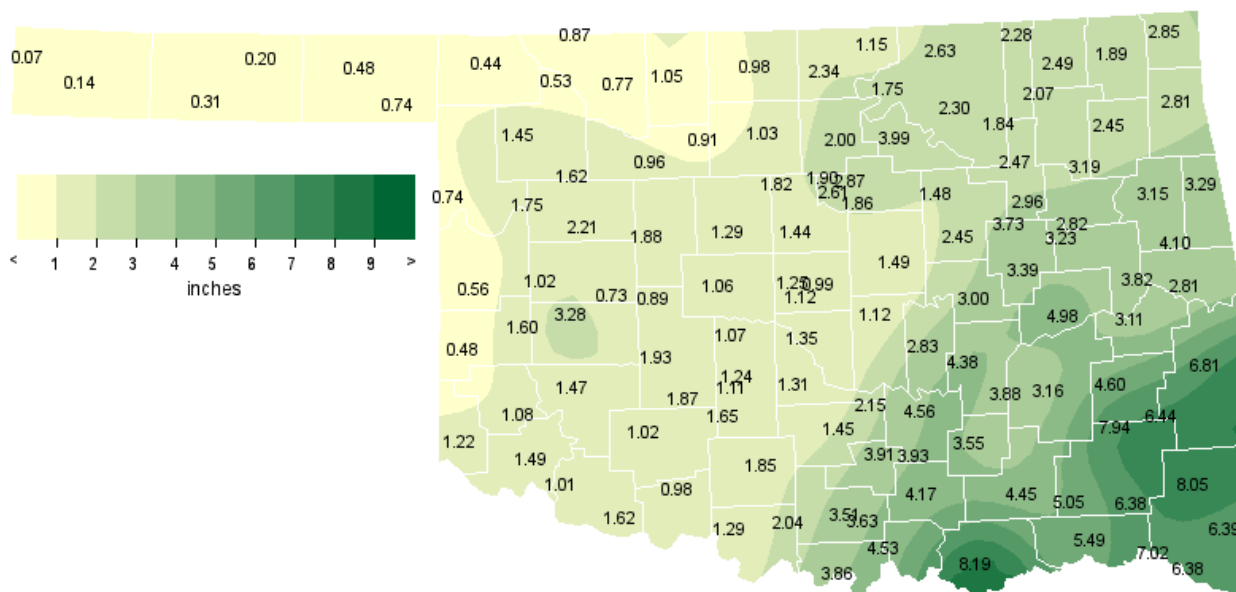
MARCH 28-29: Rain was on hiatus for a couple days which helped make for some very comfortable and mild weather. Maximum temperatures were between 67 degrees and 76 degrees both days. Minimum temperatures varied between 24 degrees and 41 degrees on the 28th, and between 36 degrees and 53 degrees on the 29th. Winds were breezy as the highest daily average wind speeds observed were 20mph on the 28th and 26mph on the 29th.

MARCH 30-31: March ended with another passing dryline, cold front that produced roughly a 10 degree cool down, and severe thunderstorms. The highest maximum temperature in Oklahoma decreased from 87 degrees in Mangum on the 30th to 77 degrees in Broken Bow on the 31st. The lowest maximum temperatures decreased from 66 degrees to 55 degrees. From the 30th to the 31st, the highest minimum temperatures fell from 65 degrees to 54 degrees and the lowest minimum temperatures were in the mid-upper 20s both days. Boise City recorded the coolest temperature during this period with 26 degrees on the 31st. Hail was reported in McClain, Kingfisher, Jefferson, Kay, and Lincoln County, ranging from .88 inches in Cashion to 1.75 inches in diameter in Carney. Two EF-2 tornadoes were also reported on the 30th, one starting in Osage County and ending in Rogers County and a second one reported in Rogers County. The highest daily rainfall amounts were 1.58 inches in Mt. Herman on the 30th and .13 inches in Hectorville on the 31st. Daily average wind speeds were less than 19mph and the highest reported Mesonet wind gusts were 49mph in Boise City on the 30th and 44mph in Medicine Park on the 31st. The National Weather Service reported a 67mph thunderstorm wind gust in Waurika on the 30th.

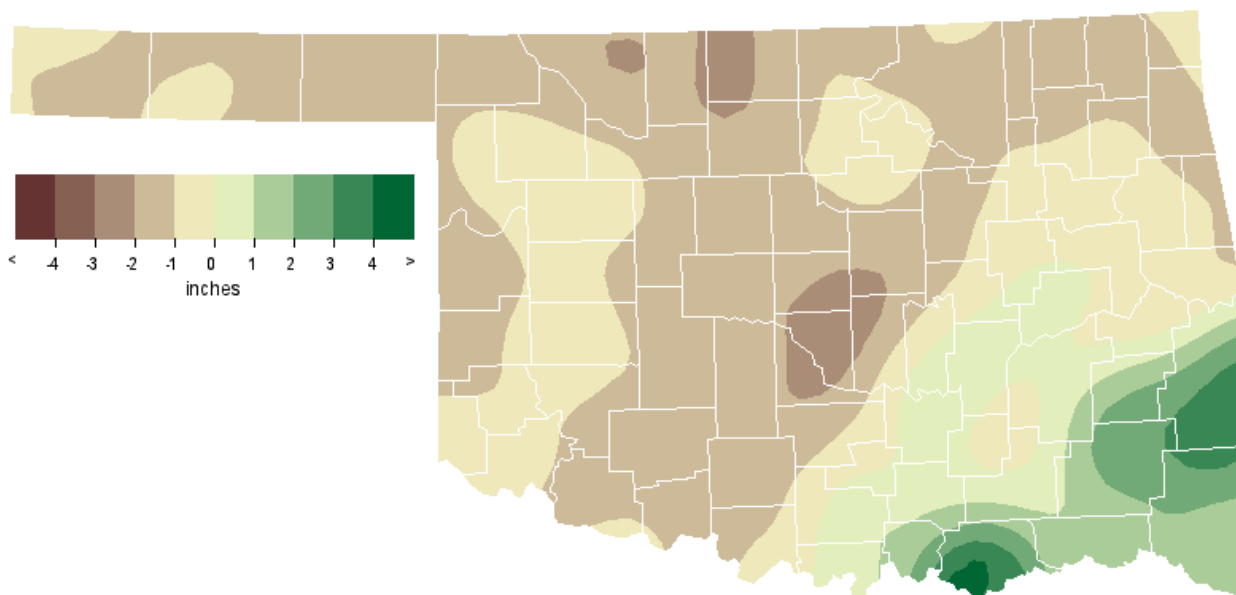
MARCH 2016 SEVERE WEATHER

No severe weather reported.

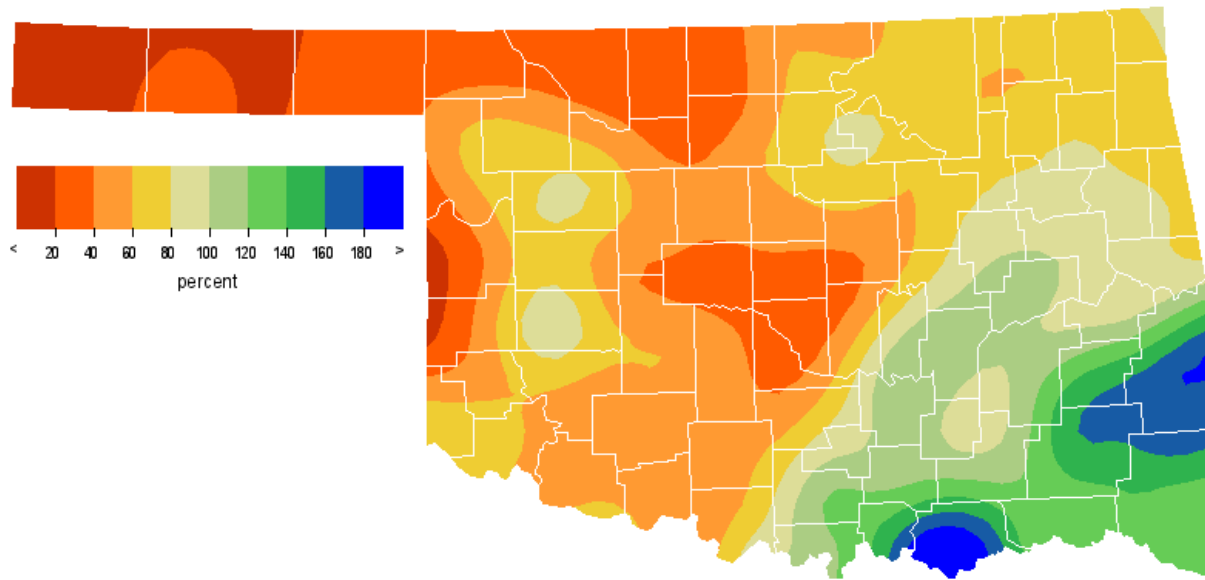
MARCH 2016 OBSERVED PRECIPITATION



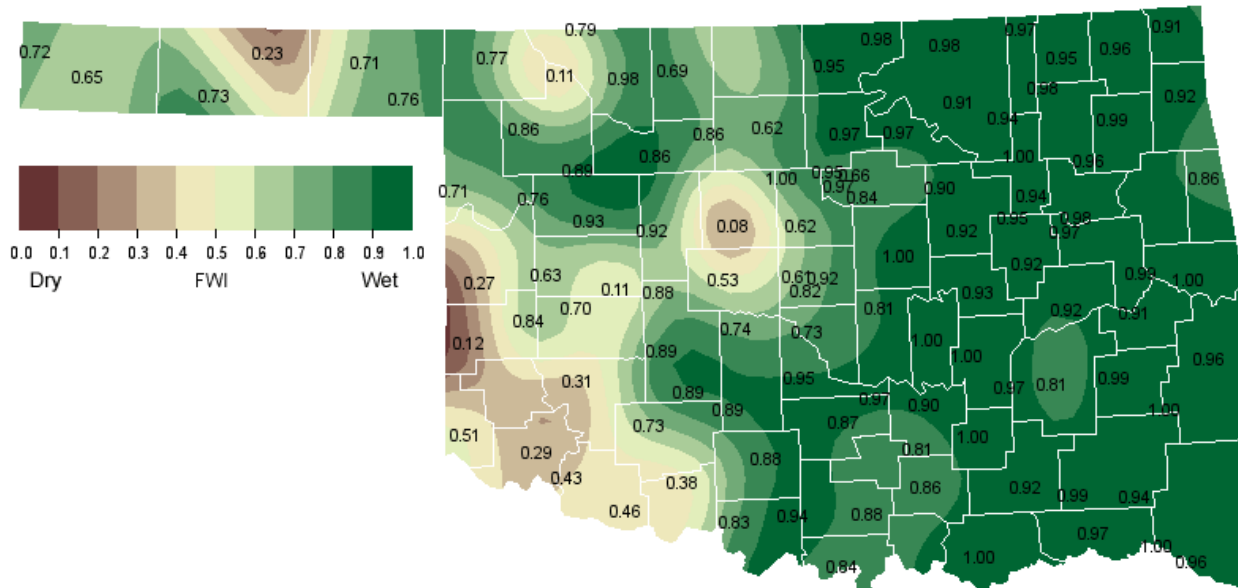
MARCH 2016 DEPARTURE FROM NORMAL PRECIPITATION



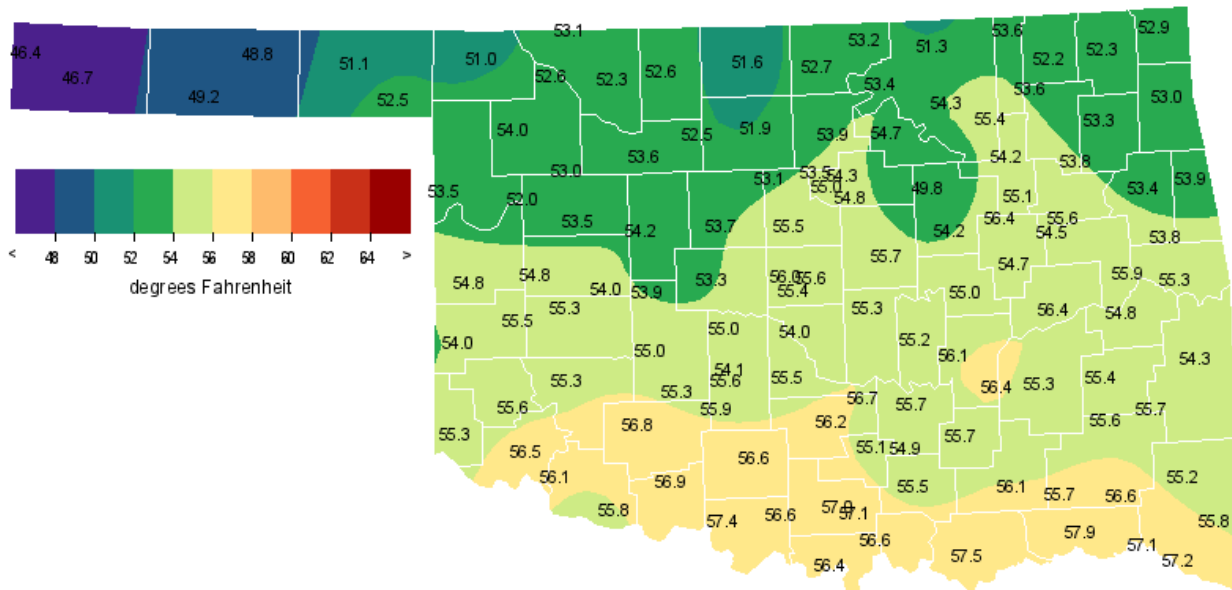
MARCH 2016 PERCENT OF NORMAL PRECIPITATION



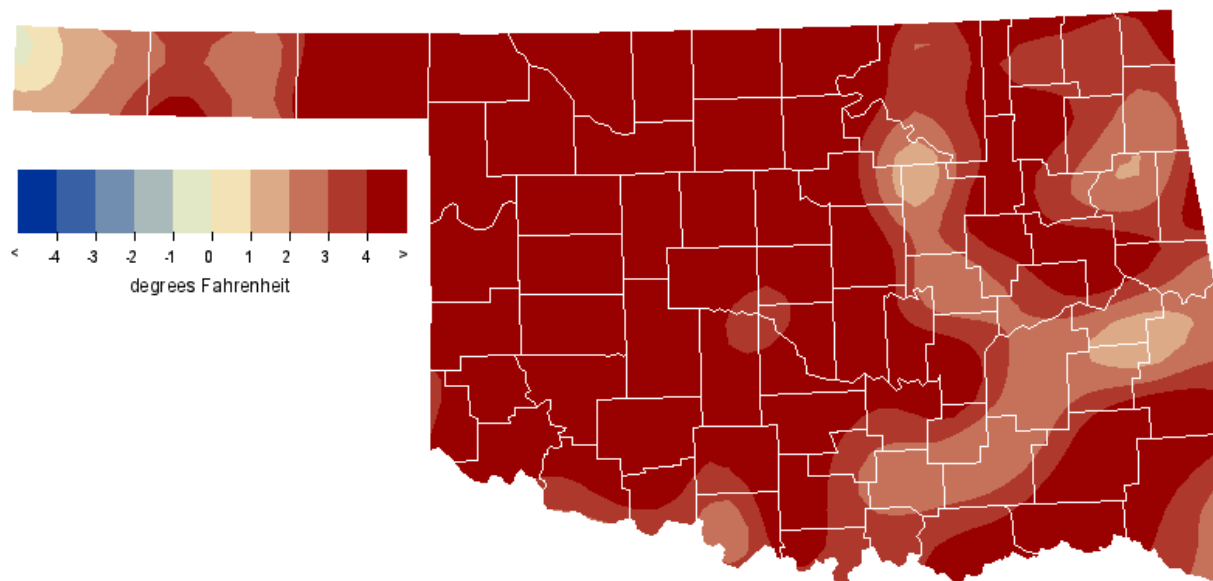
MARCH 2016 AVERAGE SOIL MOISTURE AT 25CM



MARCH 2016 AVERAGE TEMPERATURE



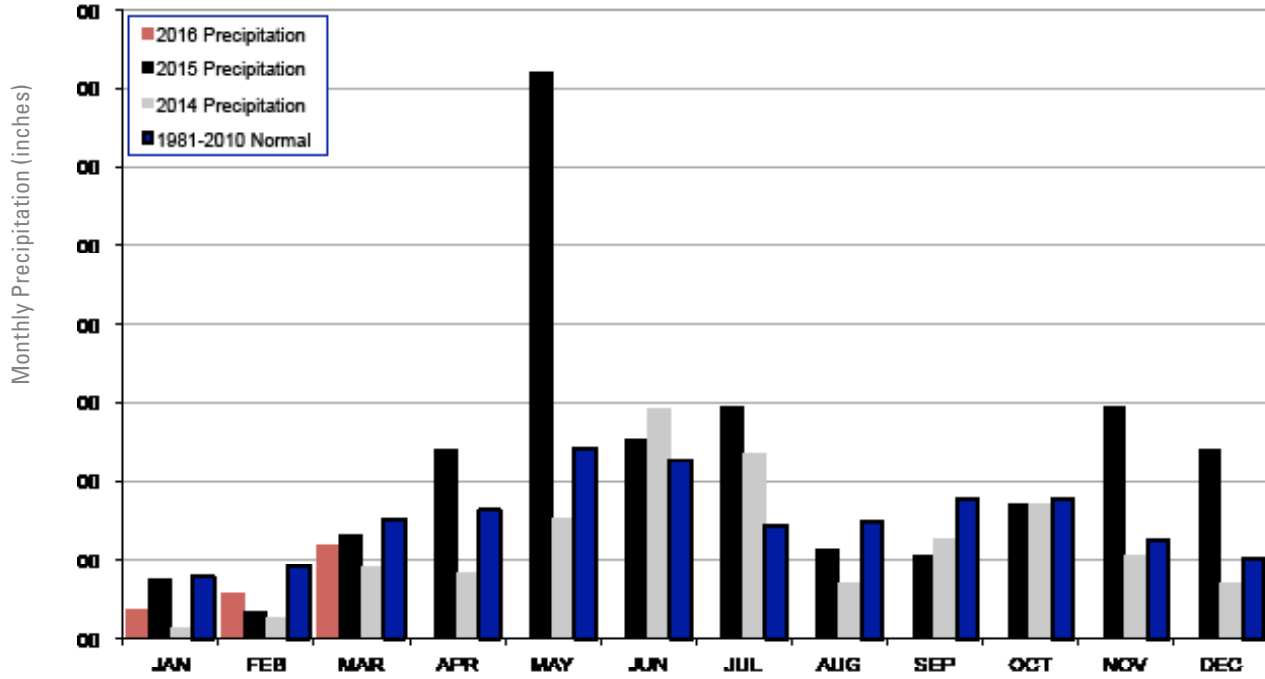
MARCH 2016 DEPARTURE FROM NORMAL TEMPERATURE



MESONET MONTHLY SUMMARY FOR MARCH 2016

NAME	MEAN HIGH			LOW			TOT HIGH			NAME	MEAN HIGH			LOW			TOT HIGH				
	TEMP	TEMP	DAY	TEMP	TEMP	DAY	HDD	CDD	PPT		24-HR	DAY	TEMP	TEMP	DAY	HDD	CDD	PPT	24-HR	DAY	
PANHANDLE																					
Arnett	53.5	86	22	22	20	361	5	.74	.38	27	Goodwell	49.2	85	22	11	20	494	4	.31	.29	27
Beaver	51.1	89	22	12	20	440	9	.48	.41	27	Hooker	48.8	86	22	13	20	503	2	.20	.17	27
Boise City	46.8	83	22	10	20	565	0	.14	.09	27	Kenton	46.4	84	22	8	20	578	0	.07	.05	27
Buffalo	51.0	88	22	17	20	446	13	.44	.30	27	Slapout	52.5	87	22	19	20	395	6	.74	.38	27
NORTH CENTRAL																					
Alva	52.3	83	14	20	20	405	11	.77	.39	27	May Ranch	53.1	88	22	22	20	378	10	.87	.31	27
Blackwell	52.7	82	14	25	25	385	4	2.34	.86	13	Medford	51.6	82	30	20	20	418	4	.98	.49	27
Breckinridge	51.9	83	14	21	19	410	4	1.03	.45	27	Newkirk	53.3	82	14	23	20	366	2	1.15	.53	27
Cherokee	52.6	81	14	22	20	394	8	1.05	.52	8	Red Rock	53.9	84	30	24	20	354	9	2.00	.68	13
Fairview	53.5	83	30	24	20	366	10	.96	.40	8	Seiling	53.0	82	14	23	20	377	6	1.62	.73	13
Freedom	52.7	87	22	17	20	393	10	.53	.35	27	Woodward	53.9	88	22	21	20	354	11	1.45	.91	13
Lahoma	52.5	83	30	24	19	393	6	.91	.38	27											
NORTHEAST																					
Bixby	55.1	80	23	30	28	313	7	2.96	1.18	8	Pawnee	54.7	82	14	26	19	326	7	3.99	1.36	8
Burbank	53.4	83	14	25	21	365	5	1.75	.54	30	Porter	55.6	82	14	31	21	296	7	2.82	.98	8
Copan	53.5	82	23	28	19	357	0	2.28	.82	30	Pryor	53.3	79	14	25	21	368	5	2.45	.83	8
Foraker	53.1	81	23	26	19	****	****	2.63	.93	30	Skiatook	55.4	81	23	30	20	301	4	1.84	.67	8
Inola	53.8	79	23	26	21	354	6	3.19	1.04	8	Talala	53.6	81	23	25	21	359	4	2.07	.86	8
Jay	53.0	79	14	28	19	375	4	2.81	1.33	8	Tulsa	56.1	81	23	33	19	****	****	2.47	1.10	8
Miami	52.9	77	14	26	28	375	1	2.85	1.06	30	Vinita	52.3	78	14	24	2	393	0	1.89	.65	30
Nowata	52.2	80	23	24	2	399	3	2.49	1.18	30	Wynona	54.4	83	23	27	21	336	6	2.30	.87	8
WEST CENTRAL																					
Bessie	55.3	85	30	25	20	309	8	3.28	3.01	8	Erick	54.0	82	22	21	20	348	7	.48	.30	8
Butler	54.7	87	14	21	20	330	11	1.02	.62	8	Putnam	53.5	84	30	25	20	362	6	2.21	1.41	13
Camargo	52.1	85	14	20	20	408	7	1.75	.93	13	Watonga	54.2	83	30	26	20	340	5	1.88	1.21	13
Cheyenne	54.8	83	14	22	20	326	10	.56	.23	27	Weatherford	54.0	83	30	22	20	343	3	.73	.49	8
Elk City	55.5	84	30	27	20	305	10	1.60	1.41	8											
CENTRAL																					
Acme	55.8	83	30	24	20	293	8	1.65	1.09	8	Ninnekah	55.7	84	30	29	25	297	8	1.11	.79	8
Bowlegs	55.3	83	14	28	25	311	9	2.83	1.09	8	Norman	55.8	83	30	28	20	****	****	1.35	.82	8
Bristow	54.2	83	23	25	21	343	9	2.45	.84	8	Oilton	53.2	82	23	24	21	****	****	1.48	.79	8
Lake Carl Blac	53.4	85	30	25	25	365	7	1.90	.71	8	OKC East	55.4	84	30	29	20	307	8	1.12	.71	8
Chandler	55.7	84	14	28	25	296	9	1.49	.58	8	OKC North	56.1	85	30	28	20	285	9	1.25	.80	8
Chickasha	54.1	82	30	26	20	344	6	1.24	.77	8	Okemah	55.0	81	14	28	21	319	9	3.00	1.16	7
El Reno	53.3	85	30	20	20	369	6	1.06	.76	8	Perkins	54.8	84	30	29	19	324	8	1.86	1.05	8
Guthrie	55.4	85	30	25	20	305	9	1.44	.66	8	Shawnee	55.3	81	14	29	25	307	6	1.12	.47	8
Kingfisher	53.8	85	30	26	20	351	3	1.29	.64	8	Spencer	55.7	83	30	26	20	299	10	.99	.52	8
Marena	55.0	85	30	27	19	317	7	2.61	1.21	13	Stillwater	54.2	85	30	28	25	344	9	2.87	1.58	13
Minco	55.0	85	30	27	20	318	8	1.07	.78	8	Washington	55.5	83	14	28	21	301	6	1.31	.60	8
Marshall	53.1	83	30	23	20	372	4	1.82	.91	8											
EAST CENTRAL																					
Cookson	53.8	79	14	29	21	349	3	4.10	1.71	8	Sallisaw	55.3	82	14	26	21	306	4	2.81	1.46	8
Eufaula	56.3	81	14	32	20	278	9	4.98	1.31	1	Stigler	54.8	82	14	26	21	326	9	3.11	1.22	8
Haskell	54.5	81	14	28	20	332	7	3.23	.97	7	Stuart	56.4	83	14	30	20	275	9	3.88	1.02	2
Hectorville	56.4	82	14	30	20	274	7	3.73	.97	8	Tablequah	53.4	79	14	27	28	361	2	3.15	1.54	8
Holdenville	56.1	82	14	30	20	284	8	4.38	2.46	7	Webbers Falls	55.9	81	14	29	21	288	5	3.82	1.53	8
McAlester	55.2	83	14	28	21	312	9	3.16	1.00	8	Westville	54.0	78	14	28	20	346	4	3.29	1.39	8
Okmulgee	54.7	82	14	29	21	330	11	3.39	1.46	7											
SOUTHWEST																					
Altus	56.5	86	30	26	20	272	9	1.49	1.04	8	Hollis	55.3	85	22	21	20	308	7	1.22	.68	8
Apache	55.3	86	30	23	20	306	7	1.87	1.45	8	Mangum	55.6	88	14	22	20	302	11	1.08	.67	8
Fort Cobb	54.9	85	30	25	20	319	7	1.93	1.63	8	Medicine Park	56.8	84	30	31	19	265	11	1.02	.59	8
Grandfield	55.8	85	30	26	20	293	8	1.62	.62	8	Tipton	56.2	85	30	25	20	279	5	1.01	.38	26
Hinton	53.9	83	30	22	20	350	6	.89	.63	8	Walters	56.9	83	30	30	20	260	8	.98	.43	8
Hobart	55.3	84	30	25	20	307	6	1.47	1.17	8											
SOUTH CENTRAL																					
Ada	55.6	83	23	29	25	300	10	4.56	2.44	7	Lane	56.0	82	14	27	21	286	8	4.45	1.39	8
Ardmore	57.1	82	23	32	21	256	10	3.63	1.39	7	Madill	56.6	84	14	29	21	272	10	4.53	1.24	7
Burneyville	56.4	86	14	28	21	278	12	3.86	1.15	7	Newport	57.0	83	14	30	20	258	10	3.51	1.88	7
Byars	56.7	84	14	28	20	265	8	2.15	.68	7	Pauls Valley	56.2	84	14	30	21	279	7	1.45	.65	8
Centrahoma	55.8	82	14	29	21	296	10	3.55	1.17	7	Ringling	56.6	82	14	29	20	269	9	2.04	.96	8
Durant	57.5	83	14	33	21	244	10	8.19	2.64	18	Sulphur	55.1	82	14	29	21	314	8	3.91	2.08	7
Fittstown	54.9	80	14	28	21	320	7	3.93	1.55	7	Tishomingo	55.5	80	14	27	21	301	8	4.17	1.30	7
Ketchum Ranch	56.6	82	30	31	20	267	7	1.85	.58	18	Waurika	57.4	85	14	28	20	247	11	1.29	.53	8
SOUTHEAST																					
Antlers	55.7	84	14	24	21	293	4	5.05	1.78	8	Mt Herman	55.3	80	15	26	21	306	4	8.05	2.13	8
Broken Bow	55.8	83	15	25	21	290	4	6.39	1.69	9	Talihina	55.7	83	15	24	21	295	5	6.44	1.87	8
Clayton	55.5	83	14	27	21	298	5	7.94	2.25	23	Valliant	57.2	84	14	27	21	250	7	7.02	1.79	9
Cloudy	56.6	83	14	26	21	265	5	6.38	1.70	8	Wilburton	55.4	82	14	25	21	305	7	4.60	1.39	8
Hugo	57.9	84	14	30	21	233	13	5.49	1.39	18	Wister	54.3	83	15	23	21	334	2	6.81	1.80	8
Idabel	57.2	83	14	28	21	250	7	6.38	2.04	9											

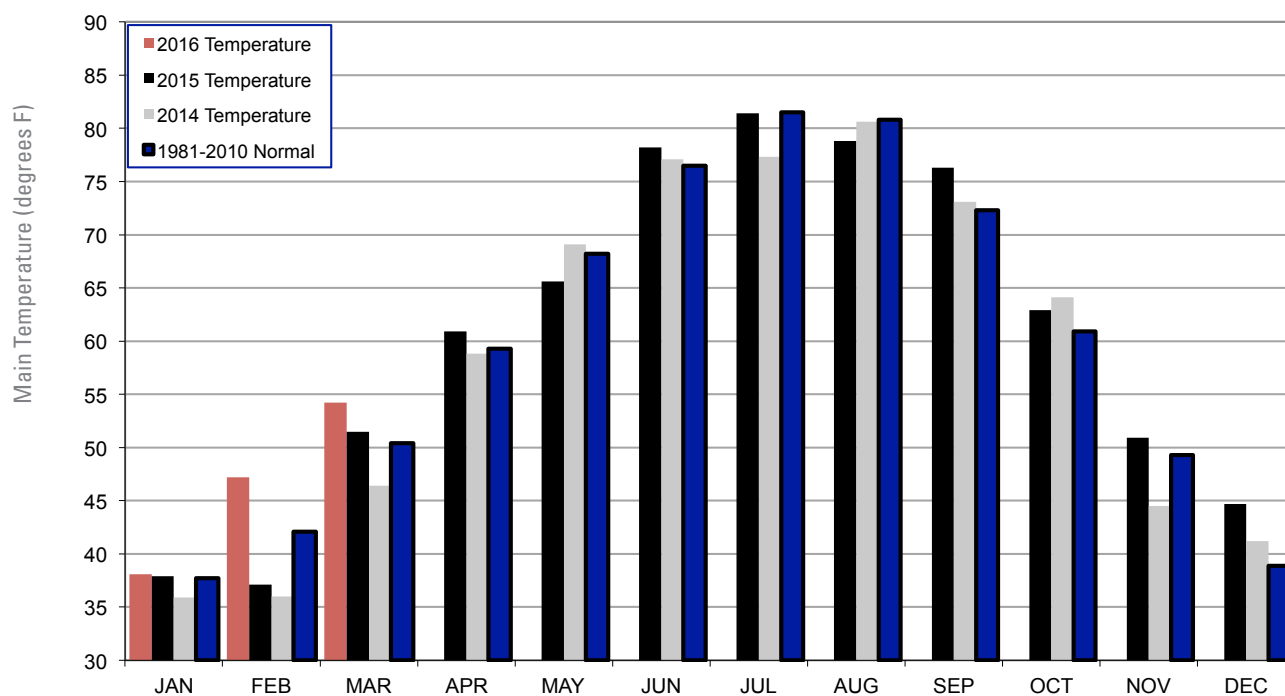
2014, 2015 AND 2016 STATEWIDE PRECIPITATION MONTHLY TOTALS VS. NORMAL



March 2016 Mesonet Precipitation Comparison

Climate Division	Precipitation (inches)	Departure from Normal (inches)	Rank since 1895	Wettest on Record (Year)	Driest on Record (Year)	Mar-15 (inches)
Panhandle	0.39	-1.14	33rd Driest	5.66 (1973)	0.01 (1936)	0.74
North Central	1.20	-1.47	45th Driest	8.27 (1973)	0.00 (1936)	0.66
Northeast	2.55	-0.96	59th Driest	9.33 (1973)	0.33 (1971)	2.44
West Central	1.50	-0.79	60th Wettest	6.76 (1973)	0.00 (1971)	0.60
Central	1.67	-1.47	39th Driest	7.45 (1990)	0.10 (1971)	2.19
East Central	3.62	-0.26	48th Wettest	10.02 (1945)	0.52 (1941)	4.50
Southwest	1.33	-1.04	52nd Driest	5.61 (1973)	0.00 (1940)	1.30
South Central	3.57	0.09	36th Wettest	8.15 (1945)	0.28 (1950)	3.30
Southeast	6.41	1.90	14th Wettest	12.50 (1945)	0.96 (2011)	6.38
Statewide	2.39	-0.65	59th Wettest	7.43 (1973)	0.39 (1971)	2.41

2014, 2015 AND 2016 STATEWIDE TEMPERATURE MONTHLY TOTALS VS. NORMAL



March 2016 Mesonet Temperature Comparison

Climate Division	Average Temp (F)	Departure from Normal (F)	Rank since 1895	Hottest on Record (Year)	Coldest on Record (Year)	Mar-15 (F)
Panhandle	49.9	3.4	18th Warmest	55.4 (2012)	34.1 (1958)	49.0
North Central	52.8	4.5	12th Warmest	58.5 (2012)	36.0 (1915)	50.2
Northeast	53.7	4.0	15th Warmest	59.7 (2012)	36.9 (1960)	49.6
West Central	54.2	4.8	8th Warmest	58.3 (1907)	37.2 (1915)	51.1
Central	54.6	3.7	18th Warmest	60.7 (2012)	38.6 (1915)	51.9
East Central	55.1	3.4	21st Warmest	61.2 (2012)	39.8 (1915)	51.6
Southwest	55.7	3.7	17th Warmest	61.4 (1907)	40.6 (1915)	52.4
South Central	56.3	2.9	26th Warmest	62.1 (1907)	41.6 (1915)	52.8
Southeast	56.0	3.5	20th Warmest	62.0 (1907)	40.3 (1915)	51.6
Statewide	54.2	3.8	18th Warmest	59.6 (2012)	38.5 (1915)	51.1

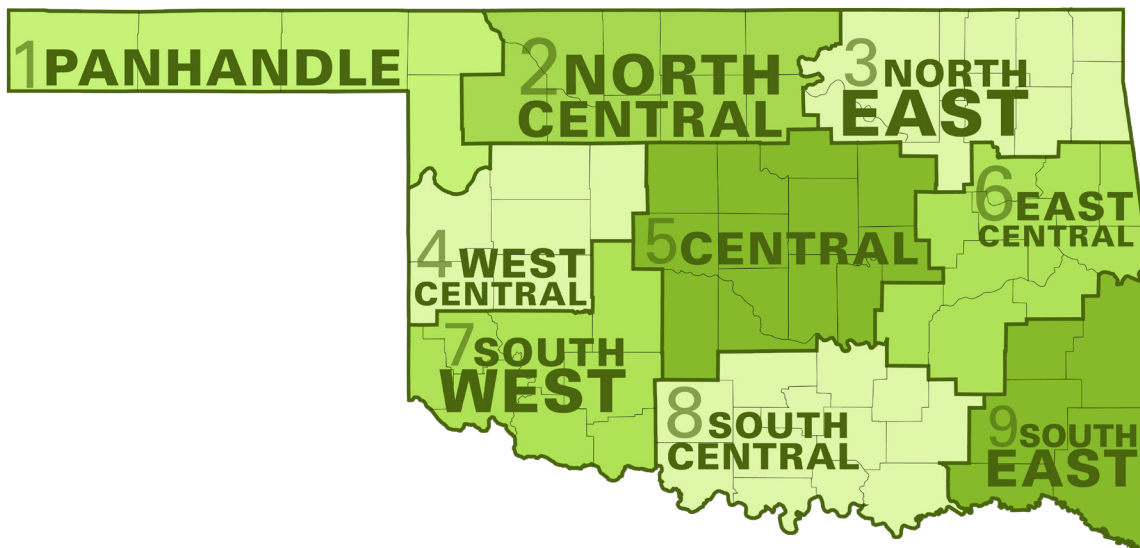
RECORD EVENT REPORTS MARCH 2016

Description	Day	Location	Record	Previous Record	Year
NONE	--	--	--	--	--

MESONET EXTREMES FOR MARCH 2016

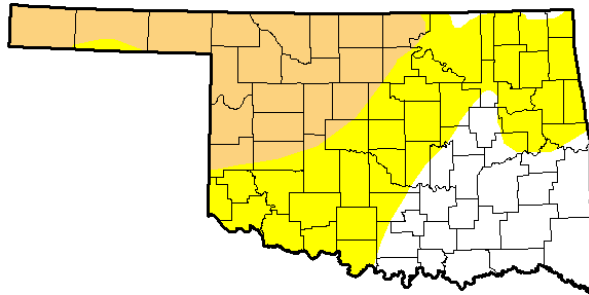
Climate Division	High Temp (F)			Low Temp (F)			High Monthly Rainfall (inches)		High Daily Rainfall (inches)		
	Day	Station	Day	Station	Day	Station	Station	Day	Station		
Panhandle	89	22nd	Beaver	8	20th	Kenton	0.74	Slapout	0.41	27th	Beaver
North Central	88	22nd	May Ranch	17	20th	Freedom	2.34	Blackwell	0.91	13th	Woodward
Northeast	83	23rd	Wynona	24	2nd	Vinita	3.99	Pawnee	1.36	8th	Pawnee
West Central	87	14th	Butler	20	20th	Camargo	3.28	Bessie	3.01	8th	Bessie
Central	85	30th	Guthrie	20	20th	El Reno	3.00	Okemah	1.58	13th	Stillwater
East Central	83	14th	McAlester	26	21st	Stigler	4.98	Eufaula	2.46	7th	Holdenville
Southwest	88	14th	Magnum	21	20th	Hollis	1.93	Fort Cobb	1.63	8th	Fort Cobb
South Central	86	14th	Burneyville	27	21st	Lane	8.19	Durant	2.64	18th	Durant
Southeast	84	14th	Antlers	23	21st	Wister	8.05	Mt Herman	2.25	23rd	Clayton
Statewide	89	22nd	Beaver	8	20th	Kenton	8.19	Durant	3.01	8th	Bessie

Oklahoma Climate Divisions



MARCH 2016 DROUGHT MONITOR

U.S. Drought Monitor Oklahoma



April 5, 2016

(Released Thursday, Apr. 7, 2016)

Valid 8 a.m. EDT

Drought Conditions (Percent Area)

	None	D0-D4	D1-D4	D2-D4	D3-D4	D4
Current	26.84	73.16	31.31	0.00	0.00	0.00
Last Week 3/29/2016	41.06	58.94	19.88	0.00	0.00	0.00
3 Months Ago 1/5/2016	100.00	0.00	0.00	0.00	0.00	0.00
Start of Calendar Year 1/2/2015	100.00	0.00	0.00	0.00	0.00	0.00
Start of Water Year 9/29/2015	52.60	47.40	16.79	6.37	0.97	0.00
One Year Ago 4/7/2015	16.76	83.24	68.27	52.74	39.72	11.60

Intensity:

- D0 Abnormally Dry
- D1 Moderate Drought
- D2 Severe Drought
- D3 Extreme Drought
- D4 Exceptional Drought

The Drought Monitor focuses on broad-scale conditions. Local conditions may vary. See accompanying text summary for forecast statements.

Author:

Richard Tinker

CPC/NOAA/NWS/NCEP



<http://droughtmonitor.unl.edu/>

INTERPRETATION INFORMATION

MEAN DAILY TEMPERATURE: Calculated from an average of the daily maximum and minimum temperatures. Daily averages are summed for each day, and then divided by the number of valid data points – typically the number of days in the month. Although this November differ from the “true” daily average, it is consistent with historical methods of observation and comparable to the normals and extremes for stations and regions of the state.

DEGREE DAYS: Degree Days are calculated each day of the month for which there is a temperature report and the mean temperature for the day is less than (Heating Degree Days) or greater than (Cooling Degree Days) 65 degrees. Daily values are summed to arrive at a monthly total. HDD/CDD are qualitative measures of how much heating/cooling was required to maintain a comfortable indoor temperature. Missing observations November result in an artificially high or low value.

SEVERE WEATHER REPORTS: Only the most significant events are listed. Tornadoes of F2 or greater strength (on the 0-5 Fujita scale), hail of two inches diameter or greater, and wind speeds of 70 miles per hour or above are listed. National Weather Service defines storms as severe when they produce a tornado, hail of three-quarters inch or greater, or wind speeds above 57 miles per hour (50 knots). For additional reports, contact the Oklahoma Climatological Survey, Storm Prediction Center, or your local National Weather Service forecast office.

SOIL MOISTURE: The soil moisture variable displayed is the Fractional Water Index (FWI), measured at a depth of 25 cm. This unitless value ranges from very dry soil having a value of 0, to saturated soils having a value of 1.

ADDITIONAL RESOURCES

SUNRISE / SUNSET TABLES

U.S. Naval Observatory: <http://aa.usno.navy.mil/data>

SEVERE STORM REPORTS

Storm Prediction Center: <http://spc.noaa.gov/climo/>

National Climatic Data Center (more than about 4-5 months old):

<http://www4.ncdc.noaa.gov/cgi-win/wwwcgi.dll?wwEvent~Storms>

SEASONAL OUTLOOKS

Climate Prediction Center:

http://www.cpc.ncep.noaa.gov/products/OUTLOOKS_index.html

CLIMATE CALENDARS AND OTHER LOCAL WEATHER AND CLIMATE INFORMATION

Oklahoma Climatological Survey:

<http://climate.mesonet.org> or <http://climate.ok.gov/>



Oklahoma Climatological Survey is the State Climate Office for Oklahoma

Dr. Kevin Kloesel Director

Dr. Chris Fiebrich Associate Director

EDITOR

Gary D. McManus State Climatologist

CONTRIBUTORS

Gary D. McManus State Climatologist

Dr. Mark A. Shafer Associate State Climatologist

Monica Deming Assistant State Climatologist

DESIGN

Ada Shih Creative Director

Jay Price Graphic Design Student Intern

For more information, contact:

Oklahoma Climatological Survey

The University of Oklahoma

120 David L. Boren Blvd., Suite 2900

Norman, OK 73072-7305

TEL: 405-325-2541

FAX: 405-325-7282

E-MAIL: ocs@ou.edu

WEBSITE: <http://climate.ok.gov>