

Wildfires rolled across the Oklahoma prairie for two weeks in April, scorching hundreds of thousands of acres and placing entire towns in jeopardy. The fires came on the heels of more than six months of drought in which western Oklahoma received virtually no significant precipitation. Vegetation that had seen abundant growth during 2017 lay dormant or dead, awaiting a spark. Weather conditions coalesced on the 12th and 17th to produce fire danger labeled “historic.” As feared, fires roared to life on the 12th, driven to a frenzy on winds gusting to over 50 mph. The two largest fires began near each other in northwest Oklahoma. The “Rhea Fire” ignited southwest of Leedey in Dewey County and would go on to consume over 286,000 acres. The “34 Complex Fire,” began as three separate fires in Woodward and Harper counties that merged into one, eventually burning over 60,000 acres. The fires were not fully contained until the 25th following two helpful rainfall events. Numerous smaller fires dotted the

rainfall total. The statewide deficit for the year through April stood at 1.15 inches, the 60th driest January-April on record. The northwestern half of the state was much drier than the southeast through that period, however, with deficits of 3-6 inches common. Boise City recorded a paltry 0.9 inches of precipitation since the beginning of the year, while Broken Bow has had 28.3 inches.

April was remarkably cool with a statewide average of 54.1 degrees, 5.2 degrees below normal to make it the second coolest on record. Only 1983’s mark of 53.2 degrees was lower. The lowest April temperature of 16 degrees occurred at Buffalo on the fourth and Slapout on the seventh. The highest temperature 102 degrees was reported at four Mesonet sites across western Oklahoma on the 12th. The January-April statewide average temperature was 46.2 degrees, 1.2 degrees below normal to rank as the 50th coolest such period on record.

April 2018 Statewide Extremes

Description	Extreme	Station	Day
High Temperature	102°F	Several	12
Low Temperature	16°F	Buffalo, Slapout	4, 7
High Precipitation	5.35 in.	Okmulgee	--
Low Precipitation	0.52 in.	Tipton	--

Oklahoma landscape. Nearly 400,000 acres burned across the state during the outbreak, burning dozens of homes and causing tens of millions of dollars in damage. Twenty fire-related injuries were reported by area hospitals, mostly due to smoke inhalation. The fires claimed two lives – a 61-year-old man died in Roger Mills County fighting a small fire that began near Leedey, and a woman died in her vehicle near Seiling.

The drought that began in October 2017 continued on during April, despite some beneficial moisture. According to preliminary numbers from the Oklahoma Mesonet, the statewide average of 2.14 inches was 1.12 inches below normal to rank as the 25th driest April since records began in 1895. Tipton had the lowest total of any Mesonet site with 0.52 inches, although Hollis was close behind at 0.54 inches. Okmulgee led the state with 5.35 inches. Only eight of the Mesonet’s 120 sites finished April with an above normal

April 2018 Statewide Statistics

Temperature

	Average	Depart.	Rank (1895-2018)
Month (April)	54.1°F	-5.2°F	2nd Coolest
Season-to-Date (Mar-Apr)	53.5°F	-1.3°F	40th Coolest
Year-to-Date (Jan-Apr)	46.2°F	-1.2°F	50th Coolest

Precipitation

	Total	Depart.	Rank (1895-2018)
Month (April)	2.14 in.	-1.12 in.	25th Driest
Season-to-Date (Mar-Apr)	4.10 in.	-2.20 in.	24th Driest
Year-to-Date (Jan-Apr)	8.54 in.	-1.15 in.	60th Driest

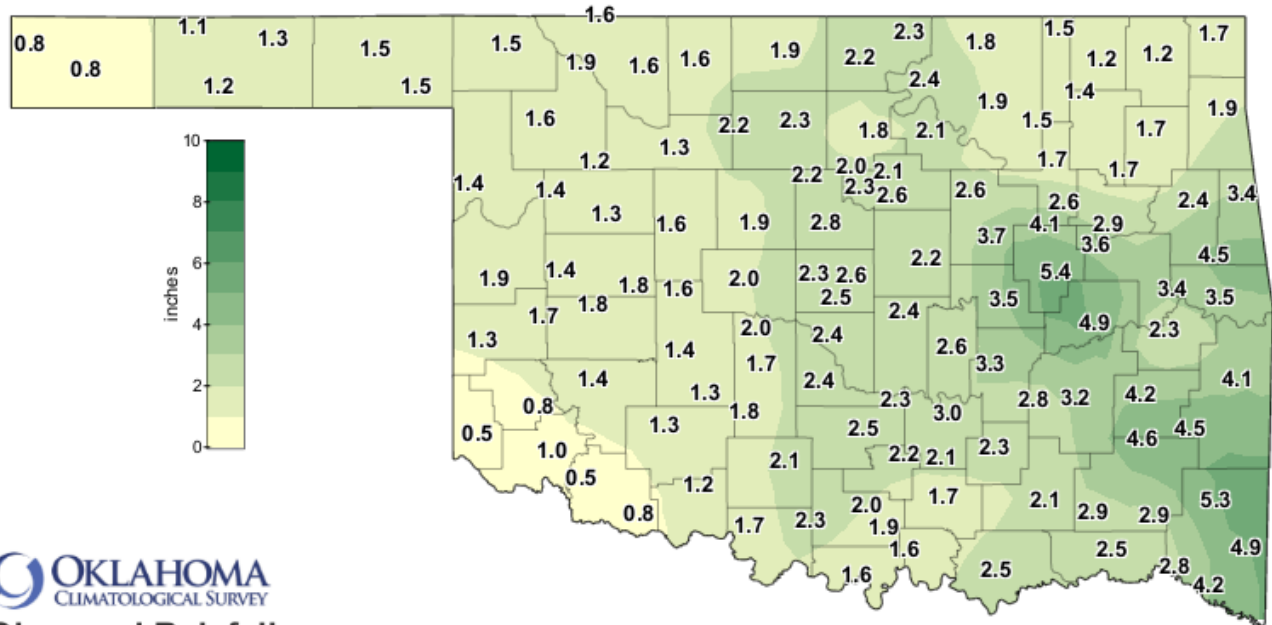
Depart. = departure from 30-year normal

Despite the modicum of relief experienced by western Oklahoma, the amount of drought in the state remained steady at 47 percent from the end of March through April, according to the U.S. Drought Monitor. The percentage of drought considered extreme-to-exceptional, the two worst categories, also remained unchanged at 35 percent.

Exceptional drought, the highest level on the Drought Monitor's intensity scale, actually increased from 15 to 20 percent.

The May temperature and precipitation outlooks from the Climate Prediction Center call for increased odds of above normal temperatures across the entire state, and above normal precipitation across all but the far western Panhandle. The greatest odds for above normal rain amounts fall across far southern Oklahoma. Despite those odds, drought is expected to persist or intensify across much of western Oklahoma due to the severity of the deficits seen in those areas since last October. To the east of that area where drought is not quite as severe, some drought improvement or removal is favored.

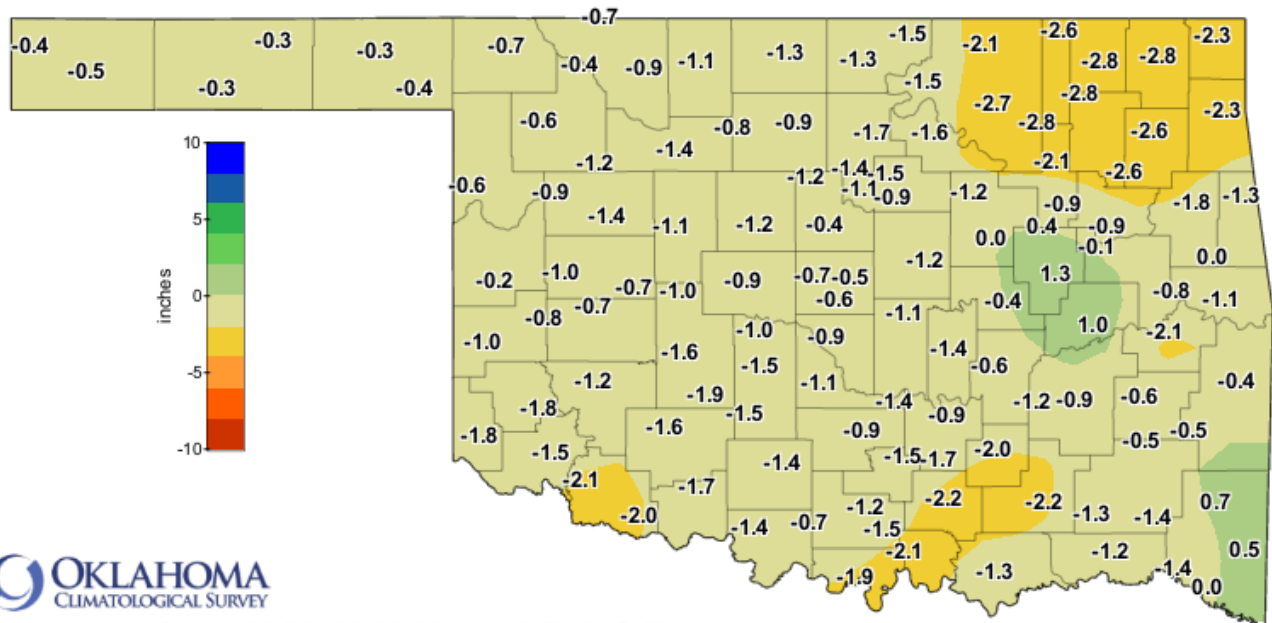
APRIL 2018 OBSERVED PRECIPITATION



OKLAHOMA
CLIMATOLOGICAL SURVEY
Observed Rainfall
Current Month

Apr 01, 2018 through Apr 30, 2018
Created 12:01:21 PM May 1, 2018 UTC. © Copyright 2018

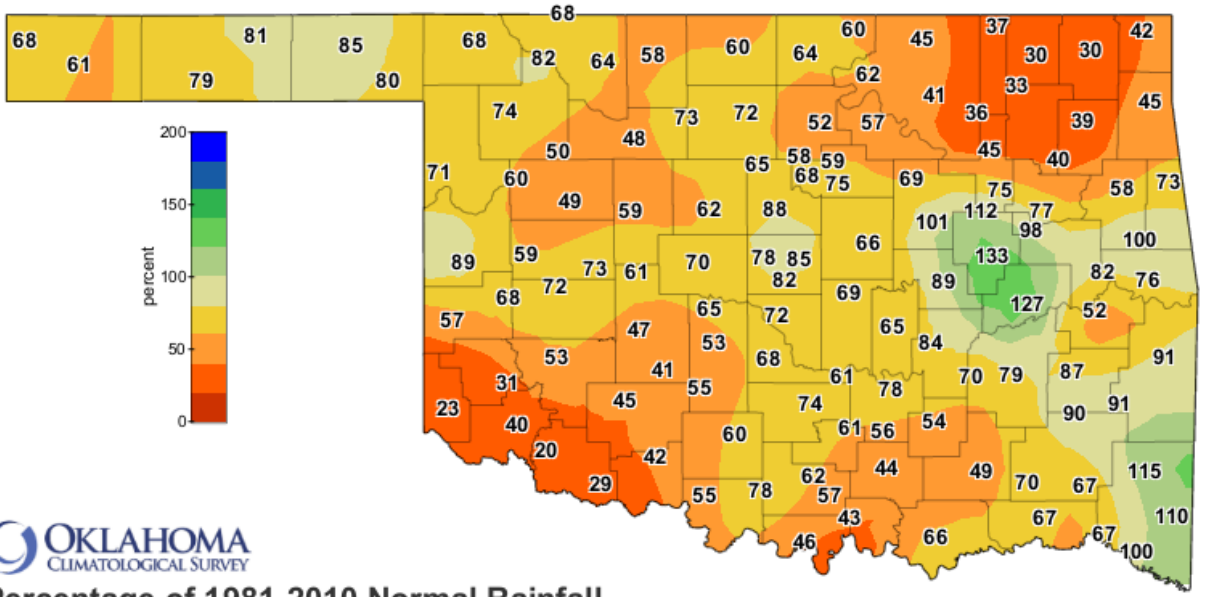
APRIL 2018 DEPARTURE FROM NORMAL PRECIPITATION



OKLAHOMA
CLIMATOLOGICAL SURVEY
Departure from 1981-2010 Normal Rainfall
Current Month

Apr 01, 2018 through Apr 30, 2018
Created 12:01:21 PM May 1, 2018 UTC. © Copyright 2018

APRIL 2018 PERCENT OF NORMAL PRECIPITATION



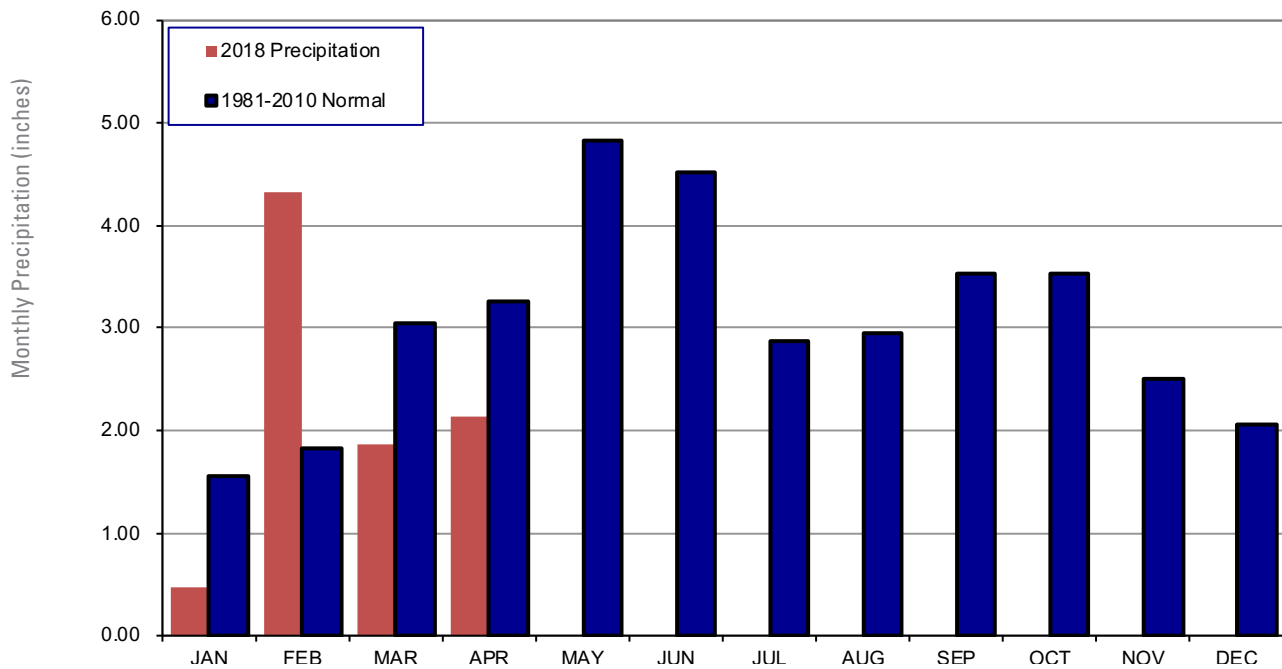
Percentage of 1981-2010 Normal Rainfall
Current Month

Apr 01, 2018 through Apr 30, 2018
Created 12:01:21 PM May 1, 2018 UTC. © Copyright 2018

MESONET MONTHLY SUMMARY FOR APRIL 2018

NAME	MEAN TEMP	HIGH TEMP	LOW TEMP	DAY	HDD	CDD	TOT PPT	HIGH 24-HR	DAY	NAME	MEAN TEMP	HIGH TEMP	LOW TEMP	DAY	HDD	CDD	TOT PPT	HIGH 24-HR	DAY		
PANHANDLE																					
Arnett	54.0	100	12	18	7	373	42	1.40	.65	20	Goodwell	51.2	93	11	18	7	432	19	1.16	.63	20
Beaver	52.3	97	12	17	7	410	30	1.48	.55	25	Hooker	51.1	94	12	17	7	433	17	1.25	.75	20
Boise City	50.3	89	12	19	7	446	6	.78	.57	20	Kenton	50.9	89	12	20	7	434	11	.80	.59	20
Buffalo	53.4	101	12	16	4	387	38	1.48	.59	20	Slapout	52.8	99	12	16	7	399	33	1.52	.66	25
Eva	49.6	93	12	17	4	470	8	1.09	.68	20											
NORTH CENTRAL																					
Alva	52.8	101	12	20	7	404	38	1.55	.71	25	May Ranch	52.4	102	12	18	7	414	37	1.56	.62	25
Blackwell	51.4	89	17	21	16	424	17	2.24	1.79	21	Medford	51.1	89	17	21	7	433	18	1.85	1.33	21
Breckinridge	51.4	90	17	22	7	429	20	2.29	1.91	21	Newkirk	51.4	89	13	21	7	424	16	2.27	1.83	21
Cherokee	52.7	95	12	21	7	400	30	1.56	.66	25	Red Rock	52.2	90	17	22	4	405	21	1.84	1.48	21
Fairview	53.5	96	12	21	7	382	37	1.25	.65	21	Seiling	53.4	100	12	19	4	393	44	1.20	.50	21
Freedom	53.2	101	12	19	7	391	37	1.92	.81	25	Woodward	53.6	101	12	18	7	383	42	1.59	.85	20
Lahoma	52.0	93	17	21	7	413	24	2.15	1.62	21											
NORTHEAST																					
Bixby	53.8	84	17	26	7	349	13	2.62	1.12	21	Pawnee	53.2	89	17	24	7	377	24	2.10	1.60	21
Burbank	52.5	89	17	22	7	395	20	2.40	1.88	21	Porter	53.5	83	17	25	7	359	13	2.90	1.28	21
Copan	52.2	83	17	24	7	393	11	1.50	.95	21	Pryor	52.4	84	17	23	16	393	15	1.65	.89	21
Foraker	51.9	86	17	20	16	408	15	1.76	1.40	21	Skiatook	53.1	85	17	23	7	371	16	1.52	.98	21
Inola	52.3	84	17	25	7	390	10	1.70	.91	21	Talala	52.4	86	17	23	16	390	10	1.35	.80	21
Jay	52.3	83	17	24	7	394	15	1.90	.77	21	Tulsa	53.8	85	17	25	7	353	17	1.70	1.17	21
Miami	51.9	81	17	24	7	405	12	1.65	.50	21	Vinita	51.4	81	17	22	16	418	9	1.17	.51	21
Nowata	51.4	83	17	23	16	420	11	1.20	.77	21	Wynona	53.2	88	17	23	7	373	18	1.90	1.24	21
WEST CENTRAL																					
Bessie	54.9	101	12	21	7	342	39	1.76	.91	21	Erick	54.9	100	12	21	4	344	41	1.25	.64	21
Butler	54.8	102	12	19	4	351	44	1.41	.55	25	Putnam	53.7	100	12	19	7	378	39	1.30	.67	21
Camargo	52.5	101	12	19	4	408	32	1.37	.43	25	Watonga	53.5	93	12	20	7	378	33	1.64	.99	21
Cheyenne	54.8	99	12	19	7	349	42	1.90	.64	25	Weatherford	54.1	95	12	20	7	359	33	1.80	1.13	21
Elk City	55.1	100	12	20	7	329	33	1.67	.66	21											
CENTRAL																					
Acme	55.3	89	12	24	7	322	30	1.80	1.21	21	Marshall	52.3	89	17	23	7	409	29	2.15	1.51	21
Bowlegs	54.6	84	17	26	7	334	22	2.56	1.45	21	Norman	55.1	87	17	24	7	327	29	2.39	1.70	21
Bristow	53.3	86	17	25	16	369	17	3.66	1.67	6	Oilton	52.6	87	17	22	4	390	18	2.55	1.45	21
Lake Carl Blac	52.6	89	17	23	4	398	25	2.01	1.46	21	OKC East	54.7	88	17	24	7	338	31	2.47	1.66	21
Chandler	54.4	87	17	24	7	343	26	2.22	1.43	21	OKC North	55.2	87	12	24	7	329	35	2.32	1.63	21
Chickasha	54.9	90	12	24	4	334	31	1.71	1.19	21	Okemah	53.9	82	28	26	7	350	16	3.49	1.37	21
El Reno	52.7	90	12	22	7	394	26	1.96	1.21	21	Perkins	53.4	88	17	24	7	373	23	2.59	1.76	21
Guthrie	53.9	88	12	24	7	365	31	2.76	2.21	21	Shawnee	54.3	85	17	24	7	342	22	2.39	1.43	21
Kingfisher	52.9	91	17	23	4	393	31	1.91	1.39	21	Spencer	54.6	87	12	23	7	345	34	2.57	1.79	21
Marena	53.4	90	17	23	7	375	28	2.32	1.78	21	Stillwater	53.5	90	17	24	7	373	29	2.06	1.52	21
Minco	54.2	89	12	22	7	349	25	1.95	1.19	21	Washington	55.8	88	17	25	7	303	28	2.39	1.85	21
EAST CENTRAL																					
Cookson	53.4	83	17	25	16	361	14	4.51	1.60	6	Sallisaw	55.0	84	17	28	16	318	17	3.50	1.41	6
Eufaula	54.5	83	17	27	7	334	18	4.90	2.73	6	Stigler	54.4	83	17	27	16	331	13	2.32	.90	21
Haskell	53.0	83	17	26	7	370	11	3.61	1.52	21	Stuart	54.8	82	28	27	7	322	15	2.77	1.20	21
Hectorville	53.6	83	17	25	7	357	16	4.07	2.02	6	Tahlequah	52.9	83	17	24	16	375	12	2.40	1.16	21
Holdenville	54.4	83	17	26	7	338	19	3.29	2.31	21	Webbers Falls	55.3	86	17	29	7	312	20	3.41	1.47	21
McAlester	54.7	83	17	27	7	330	20	3.18	.96	21	Westville	52.6	82	17	25	16	382	10	3.38	1.06	13
Okmulgee	53.3	85	17	26	7	368	16	5.35	3.57	6											
SOUTHWEST																					
Altus	57.5	101	12	25	7	269	45	.97	.44	25	Hollis	57.7	102	12	25	7	266	48	.54	.26	21
Apache	54.7	90	12	23	7	334	26	1.28	.72	21	Mangum	55.6	102	12	21	4	319	36	.81	.31	21
Fort Cobb	54.7	92	12	23	7	336	28	1.37	.75	21	Medicine Park	56.5	91	12	22	7	290	34	1.32	.82	21
Grandfield	56.9	94	17	27	7	278	35	.81	.53	21	Tipton	57.2	100	17	25	4	274	41	.52	.24	25
Hinton	53.8	93	12	21	7	367	30	1.62	.88	21	Walters	56.7	91	12	26	7	275	26	1.20	.93	21
Hobart	55.4	98	12	22	7	327	38	1.37	.63	21											
SOUTH CENTRAL																					
Ada	55.1	84	17	27	7	318	20	2.97	2.24	21	Lane	55.5	82	17	28	8	298	13	2.14	.69	21
Ardmore	57.1	87	17	29	7	264	26	1.93	.85	21	Madill	56.6	84	17	29	8	272	21	1.59	.75	21
Burneyville	*****	***	***	***	***	*****	*****	1.64	.71	21	Newport	56.9	86	17	28	7	269	25	2.01	1.08	21
Byars	55.6	85	17	25	7	305	24	2.27	1.41	21	Pauls Valley	56.5	88	17	26	7	280	26	2.51	1.58	21
Centrahoma	55.4	85	17	28	8	305	17	2.29	1.17	21	Ringling	57.4	89	13	28	7	255	28	2.33	1.88	21
Durant	57.2	82	17	31	8	254	19	2.54	1.09	6	Sulphur	55.8	84	17	27	7	301	24	2.23	1.54	21
Fittstown	55.2	83	17	26	8	308	15	2.14	1.28	21	Tishomingo	56.1	83	17	28	7	286	18	1.71	.91	21
Ketchum Ranch	57.0	89	17	26	7	272	30	2.05	1.46	21	Waurika	58.2	93	17	28	7	247	42	1.69	1.19	21
SOUTHEAST																					
Antlers	55.2	82	17	27	8	304	9	2.93	1.08	13	Mt Herman	55.4	81	28	28	8	293	4	5.25	1.81	6
Broken Bow	56.9	82	30	29	16	250	5	4.90	2.51	13	Talihina	55.4	83	28	28	8	304	16	4.47	1.85	6
Clayton	55.6	83	28	29	8	297	14	4.60	2.14	6	Valliant	56.5	81	28	29	8	264	8	2.78	.96	6
Cloudy	55.6	81	28	28	8	287	5	2.90	.84	6	Wilburton	55.2	83	17	28	8	313	19	4.17	2.04	6
Hugo	56.8	81	17	29	8	257	11	2.46	1.00	6	Wister	54.1	83	17	26	16	331	5	4.08	1.81	13
Idabel	57.2	81	28	30	8	241	7	4.15	1.63	13											

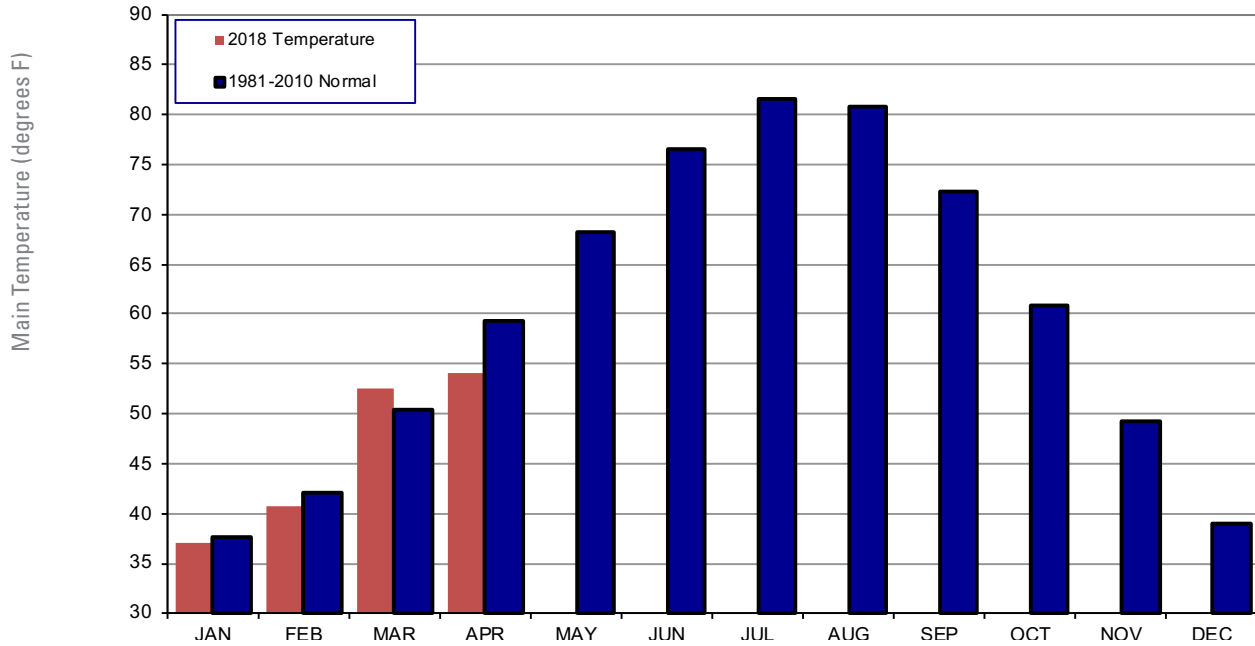
2018 STATEWIDE PRECIPITATION MONTHLY TOTALS VS. NORMAL



April 2018 Mesonet Precipitation Comparison

Climate Division	Precipitation (inches)	Departure from Normal (inches)	Rank since 1895	Wettest on Record (Year)	Driest on Record (Year)	Apr-17 (inches)
Panhandle	1.22	-0.44	51st Driest	5.31 (1900)	0.02 (1935)	4.39
North Central	1.79	-1.03	33rd Driest	7.14 (1999)	0.47 (2014)	5.38
Northeast	1.81	-2.26	11th Driest	10.82 (2017)	0.22 (1989)	10.82
West Central	1.57	-0.84	35th Driest	8.43 (1997)	0.16 (1996)	4.74
Central	2.37	-0.98	33rd Driest	9.37 (1942)	0.28 (1989)	7.92
East Central	3.59	-0.64	56th Driest	11.32 (1957)	0.74 (1989)	9.76
Southwest	1.07	-1.56	18th Driest	7.53 (1997)	0.14 (1989)	3.95
South Central	2.13	-1.49	20th Driest	11.33 (1942)	0.40 (1903)	4.78
Southeast	3.88	-0.60	50th Driest	12.81 (1957)	0.80 (1987)	6.76
Statewide	2.14	-1.12	25th Driest	8.32 (1942)	0.55 (1989)	6.60

2018 STATEWIDE TEMPERATURE MONTHLY TOTALS VS. NORMAL



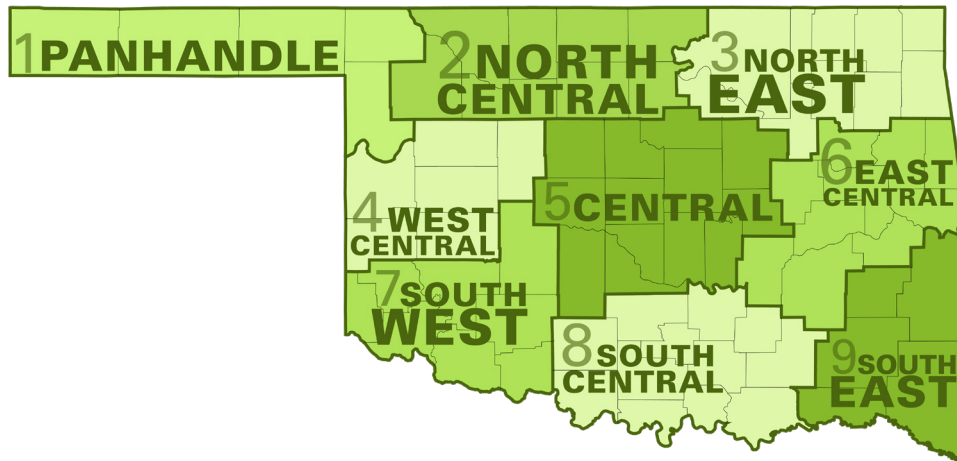
April 2018 Mesonet Temperature Comparison

Climate Division	Average Temp (F)	Departure from Normal (F)	Rank since 1895	Hottest on Record (Year)	Coldest on Record (Year)	Apr-17 (F)
Panhandle	51.8	-3.5	14th Coolest	62.1 (1946)	48.8 (1983)	57.1
North Central	52.4	-5.3	4th Coolest	64.4 (1981)	50.4 (1983)	59.2
Northeast	52.6	-6.4	2nd Coolest	65.7 (1954)	52.5 (1983)	60.8
West Central	54.3	-4.1	10th Coolest	65.1 (2006)	52.2 (1983)	60.0
Central	54.0	-5.9	2nd Coolest	66.9 (2006)	53.6 (1983)	61.6
East Central	54.0	-6.4	1st Coolest	67.8 (1896)	54.5 (1907)	63.0
Southwest	56.1	-4.5	7th Coolest	67.6 (2006)	54.9 (1997)	62.0
South Central	56.4	-5.3	1st Coolest	68.8 (1925)	56.6 (1983)	63.7
Southeast	55.8	-4.8	3rd Coolest	66.7 (2006)	55.3 (1983)	64.2
Statewide	54.1	-5.2	2nd Coolest	65.8 (2006)	53.2 (1983)	61.2

MESONET EXTREMES FOR APRIL 2018

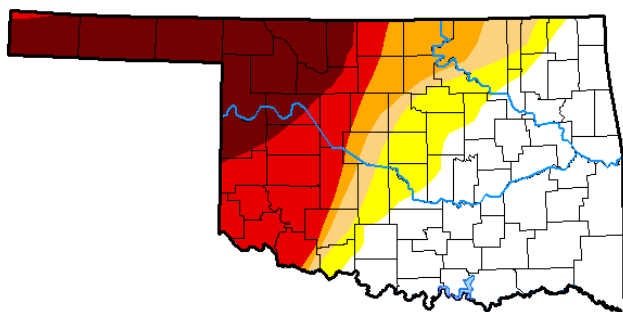
Climate Division	High Temp (F)	Day	Station	Low Temp (F)	Day	Station	High Monthly Rainfall (inches)	Station	High Daily Rainfall (inches)	Day	Station
Panhandle	101	12th	Buffalo	16	4th	Buffalo	1.52	Slapout	0.75	20th	Hooker
North Central	102	12th	May Ranch	18	7th	Woodward	2.29	Breckinridge	1.91	21st	Breckinridge
Northeast	89	17th	Burbank	20	16th	Foraker	2.90	Porter	1.88	21st	Burbank
West Central	102	12th	Butler	19	4th	Camargo	1.90	Cheyenne	1.13	21st	Weatherford
Central	91	17th	Kingfisher	22	7th	El Reno	3.66	Bristow	2.21	21st	Guthrie
East Central	86	17th	Webbers Falls	24	16th	Tahlequah	5.35	Okmulgee	3.57	6th	Okmulgee
Southwest	102	12th	Mangum	21	4th	Mangum	1.62	Hinton	0.93	21st	Walters
South Central	93	17th	Waurika	25	7th	Byars	2.97	Ada	2.24	21st	Ada
Southeast	83	28th	Talihina	26	16th	Wister	5.25	Mt Herman	2.51	13th	Broken Bow
Statewide	102	12th	Mangum	16	4th	Buffalo	5.35	Okmulgee	3.57	6th	Okmulgee

Oklahoma Climate Divisions



U.S. Drought Monitor Oklahoma

April 24, 2018
(Released Thursday, Apr. 26, 2018)
Valid 8 a.m. EDT



Drought Conditions (Percent Area)

	None	D0-D4	D1-D4	D2-D4	D3-D4	D4
Current	42.23	57.77	47.44	42.07	34.84	19.50
Last Week 04-17-2018	41.71	58.29	47.44	42.07	35.54	19.50
3 Months Ago 01-23-2018	0.00	100.00	99.17	52.62	14.56	0.00
Start of Calendar Year 01-02-2018	0.00	100.00	77.15	38.76	0.00	0.00
Start of Water Year 09-26-2017	64.46	35.54	0.77	0.00	0.00	0.00
One Year Ago 04-25-2017	66.53	33.47	16.81	0.00	0.00	0.00

Intensity:

- D0 Abnormally Dry
- D1 Moderate Drought
- D2 Severe Drought
- D3 Extreme Drought
- D4 Exceptional Drought

The Drought Monitor focuses on broad-scale conditions. Local conditions may vary. See accompanying text summary for forecast statements.

Author:

Brad Rippey
U.S. Department of Agriculture



<http://droughtmonitor.unl.edu/>

INTERPRETATION INFORMATION

MEAN DAILY TEMPERATURE: Calculated from an average of the daily maximum and minimum temperatures. Daily averages are summed for each day, and then divided by the number of valid data points – typically the number of days in the month. Although this November differ from the “true” daily average, it is consistent with historical methods of observation and comparable to the normals and extremes for stations and regions of the state.

DEGREE DAYS: Degree Days are calculated each day of the month for which there is a temperature report and the mean temperature for the day is less than (Heating Degree Days) or greater than (Cooling Degree Days) 65 degrees. Daily values are summed to arrive at a monthly total. HDD/CDD are qualitative measures of how much heating/cooling was required to maintain a comfortable indoor temperature. Missing observations November result in an artificially high or low value.

ADDITIONAL RESOURCES

SUNRISE / SUNSET TABLES

U.S. Naval Observatory: <http://aa.usno.navy.mil/data>

SEVERE STORM REPORTS

Storm Prediction Center: <http://spc.noaa.gov/climo/>

National Centers for Environmental Information:

<https://www.ncdc.noaa.gov/stormevents/>

SEASONAL OUTLOOKS

Climate Prediction Center:

http://www.cpc.ncep.noaa.gov/products/OUTLOOKS_index.shtml

CLIMATE CALENDARS AND OTHER LOCAL WEATHER AND CLIMATE INFORMATION

Oklahoma Climatological Survey:

<http://climate.mesonet.org> or <http://climate.ok.gov/>



Oklahoma Climatological Survey is the State Climate Office for Oklahoma

Dr. Kevin Kloesel Director

Dr. Chris Fiebrich Associate Director

EDITOR

Gary D. McManus State Climatologist

DESIGN

Ada Hoang Creative Director

For more information, contact:

Oklahoma Climatological Survey

The University of Oklahoma

120 David L. Boren Blvd., Suite 2900

Norman, OK 73072-7305

TEL: 405-325-2541

FAX: 405-325-7282

E-MAIL: ocs@ou.edu

WEBSITE: <http://climate.ok.gov>