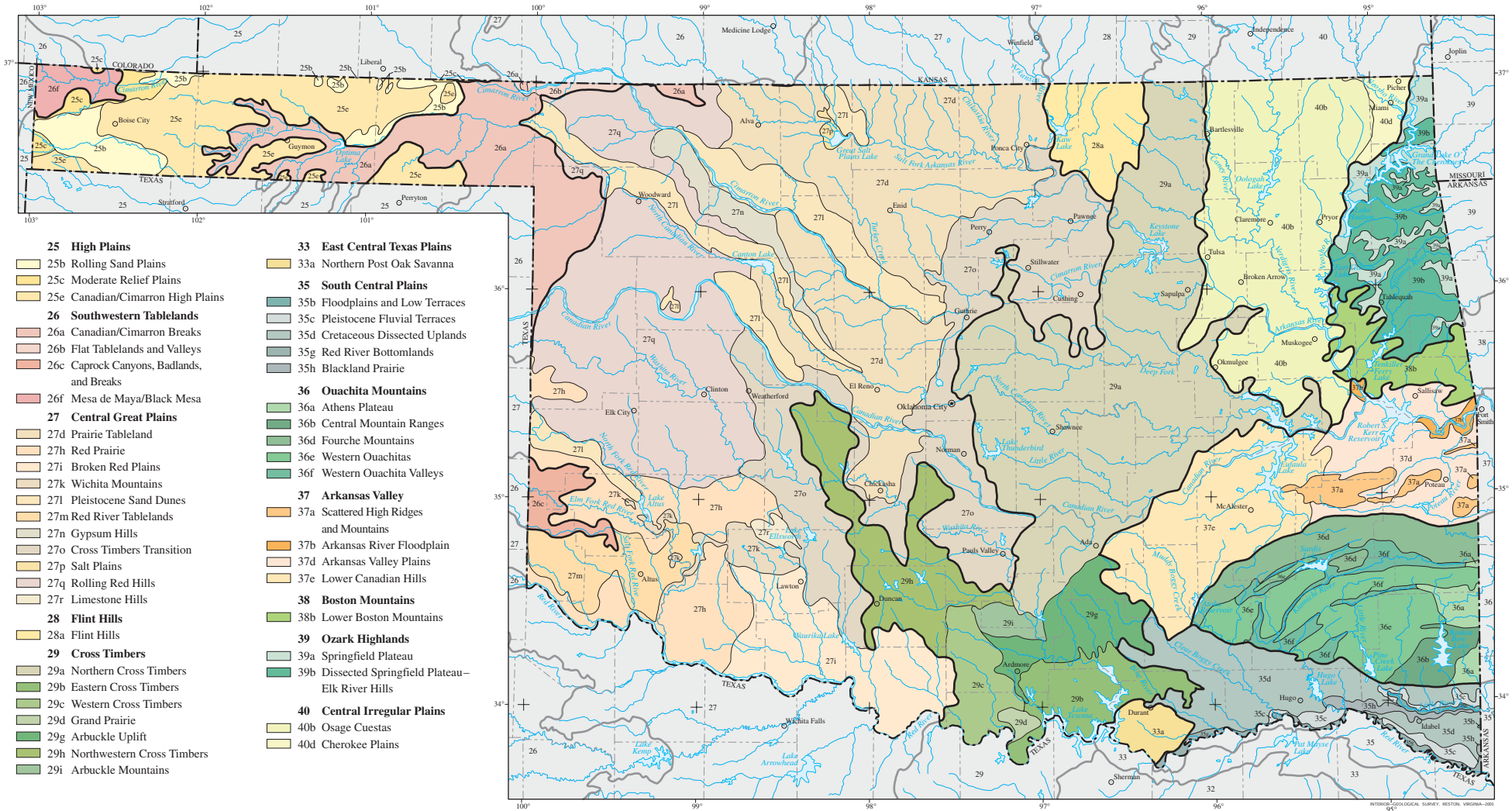
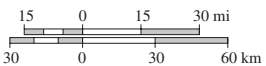


Ecoregions of Oklahoma



- Level III ecoregion boundary
- Level IV ecoregion boundary
- - - State boundary
- - - - County boundary

SCALE 1:3 125 000



Albers Equal Area Projection
Standard Parallels 34° 30' N and 36° 00' N

PRINCIPAL AUTHORS: Alan J. Woods (Oregon State University), James M. Omernik (U.S. Geological Survey), Daniel R. Butler (Oklahoma Conservation Commission–Water Quality Division), Jimmy G. Ford (U.S. Department of Agriculture–Natural Resources Conservation Service), James E. Henley (U.S. Department of Agriculture–Natural Resources Conservation Service), Bruce W. Hoagland (Oklahoma Biological Survey), Derek S. Arndt (Oklahoma Climatological Survey), and Brian C. Moran (Indus Corporation).

COLLABORATORS AND CONTRIBUTORS: Kurt Atkinson (Oklahoma Department of Agriculture, Food, and Forestry), Sandy A. Bryce (Dynamac Corporation), Shannen S. Chapman (Dynamac Corporation), Philip A. Crocker (U.S. Environmental Protection Agency), Glenn E. Griffith (Dynamac Corporation), Chris Hise (The Nature Conservancy), Charlie Howell (U.S. Environmental Protection Agency), Ron Jarman (Apex Environmental, Inc.), Thomas R. Loveland (U.S. Geological Survey), Kenneth V. Luza (Oklahoma Geological Survey), Phillip Moershel (Oklahoma Water Resources Board), Mark E. Moseley (U.S. Department of Agriculture–Natural Resources Conservation Service), Randy Parham (Oklahoma Department of Environmental Quality), and Brooks Trammell (Oklahoma Conservation Commission–Water Quality Division).

REVIEWERS: George A. Bukenhofer (U.S. Forest Service), Richard A. Marston (Boone Pickens School of Geology, Oklahoma State University), David V. Peck (U.S. Environmental Protection Agency), and Dale Splinter (Boone Pickens School of Geology, Oklahoma State University).

CITING THIS POSTER: Woods, A.J., Omernik, J.M., Butler, D.R., Ford, J.G., Henley, J.E., Hoagland, B.W., Arndt, D.S., and Moran, B.C., 2005. Ecoregions of Oklahoma (color poster with map, descriptive text, summary tables, and photographs): Reston, Virginia, U.S. Geological Survey (map scale 1:1,250,000).

This project was supported in part by funds from USEPA Region 6, Water Quality Cooperative Agreement under the provisions of Section 104(b) (3) of the Clean Water Act to the Oklahoma Water Resources Board (through the Office of the Secretary of Environment, State of Oklahoma). Assistance from the private sector is acknowledged in the form of Ron Jarman, Ph.D., on loan from Apex Environmental, Inc.

Electronic versions of ecoregion maps and posters as well as other ecoregion resources are available at <http://www.epa.gov/wed/pages/ecoregions.htm>